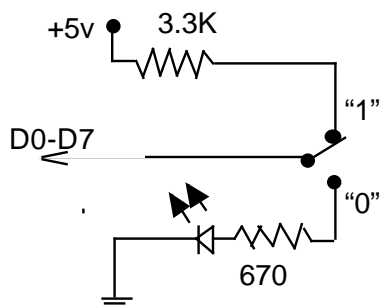


Connect pin #26 to +5 volts to allow compability with the 6264 SRAM part. RAM can then be demonstrated using the same circuit. The "read" and "write" buttons are pulled up through 3.3 K resistors.



Eight switches for data input. Place in "0" position for data output. The eight LEDs will indicate "one" by being lit. This is accomplished, by using using a low current LED (2 ma.). Digkey#HLMP-4700QT-ND