

# Geographic Visualization

Winter Quarter 2009/2010

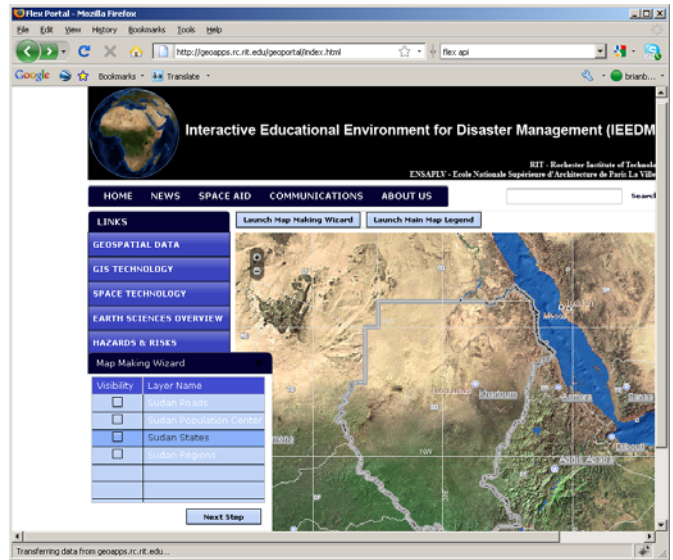
Course# 0693-398-02 (undergraduate) co-listed with 0693-798-02 (graduate)

Time/Location: TR 10:00am-11:50am, Building 9, Room 1130

Credits: 4

## Description

This course examines concepts and techniques associated with dynamic map construction, usage, and assessment. Specific topics include information visualization techniques applied to geographic information, developing animated and interactive maps, “mapping mashup” construction and programming, using maps as a means to support group work, sources of dynamic geographic information, and use and usability of dynamic maps. **No prerequisites.**

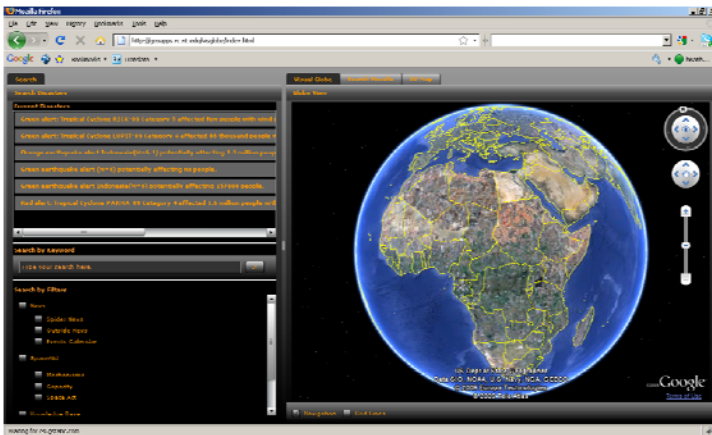


*An interactive mapping tool developed by RIT students using Adobe Flex and ArcGIS server for learning about hazards in the Sudan*

## Objectives

The overall course objective is for students to be able to describe and apply the principles of Geographic Visualization. This objective will be achieved through the following learning goals:

- Understanding of how animation and interactivity can be incorporated into maps to support data exploration and understanding
- Understanding of how to perform the design, construction, and programming of “mapping mashups” using a variety of web-based technologies such as Adobe Flex, the ArcGIS Server Flex API, and other mapping APIs.
- Understanding of how to programmatically fuse heterogeneous sources of geographic information into dynamic maps
- Understanding of how to evaluate dynamic and interactive maps



*An online mapping tool developed by RIT students using Adobe Flex and the Google Earth API for real-time analysis and visual representation of world-wide disaster events*

## For more information contact:

Brian Tomaszewski, Ph.D.  
Assistant Professor  
Center for Multidisciplinary Studies  
phone: 585-475-2859  
bmtski@rit.edu